

SELF-SUPPORTING TOWERS





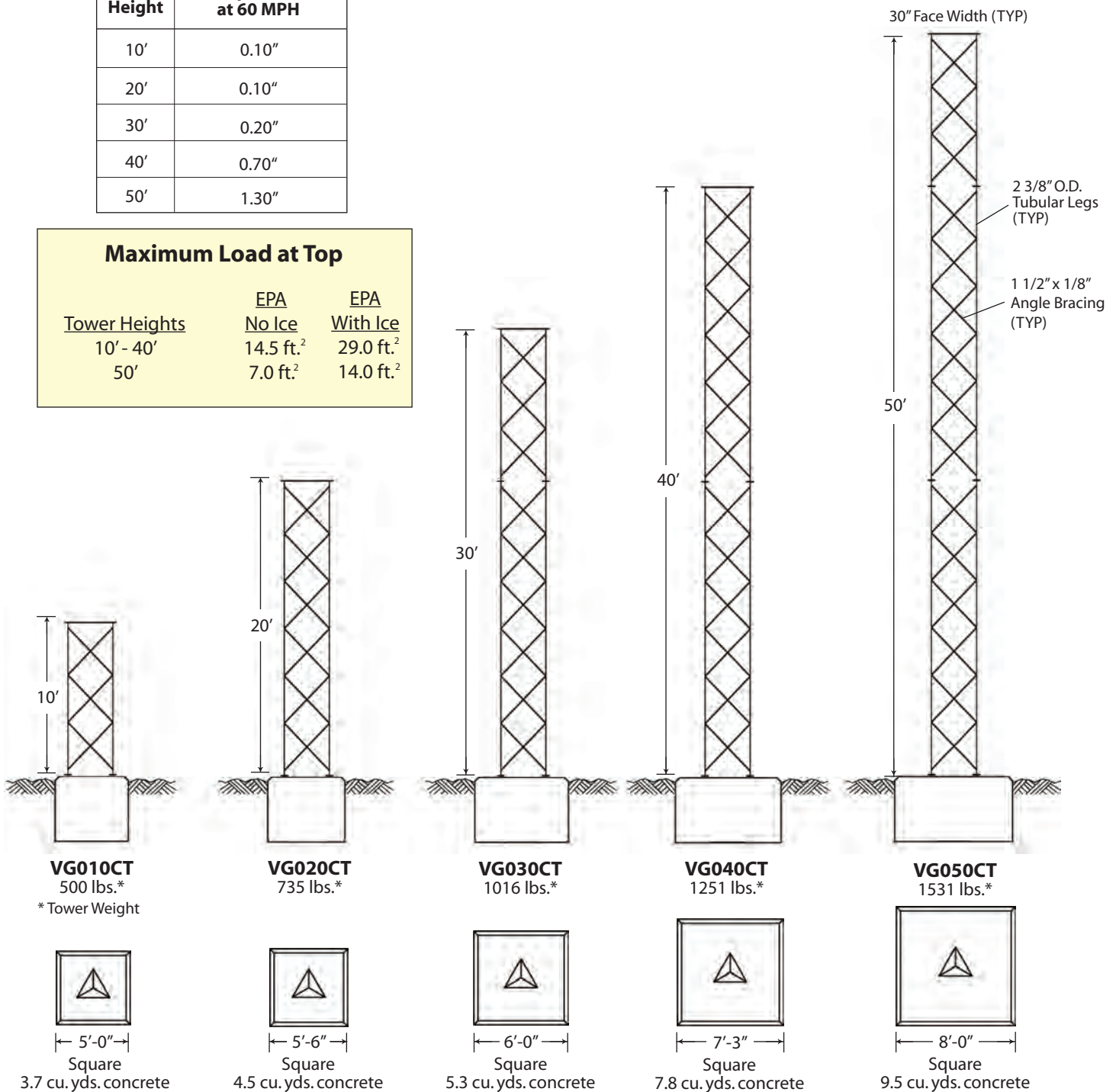
STANDARD VG SELF-SUPPORTING CAMERA TOWERS (field bolted)

REV. G: 110 MPH 3-SEC GUST WIND SPEED (NO ICE),
40 MPH 3-SEC GUST WIND SPEED (3/4" ICE),
CLASS II, EXPOSURE C, TOPO CATEGORY 1
SEISMIC COEFFICIENT $S_s \leq 1.0$

Tower Height	Max. Tip Deflection at 60 MPH
10'	0.10"
20'	0.10"
30'	0.20"
40'	0.70"
50'	1.30"

Maximum Load at Top		
Tower Heights	EPA No Ice	EPA With Ice
10' - 40'	14.5 ft. ²	29.0 ft. ²
50'	7.0 ft. ²	14.0 ft. ²

KNOCKED DOWN

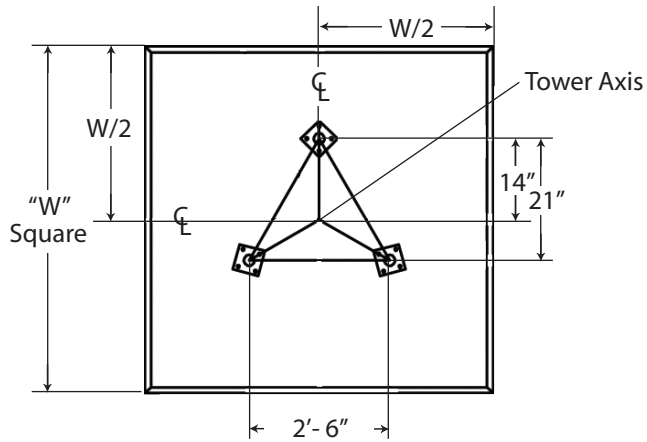


Includes anchor bolts, templates, tower sections, Rev G grounding material, 1/2" top mounting plate with attachment hardware and step bolts.

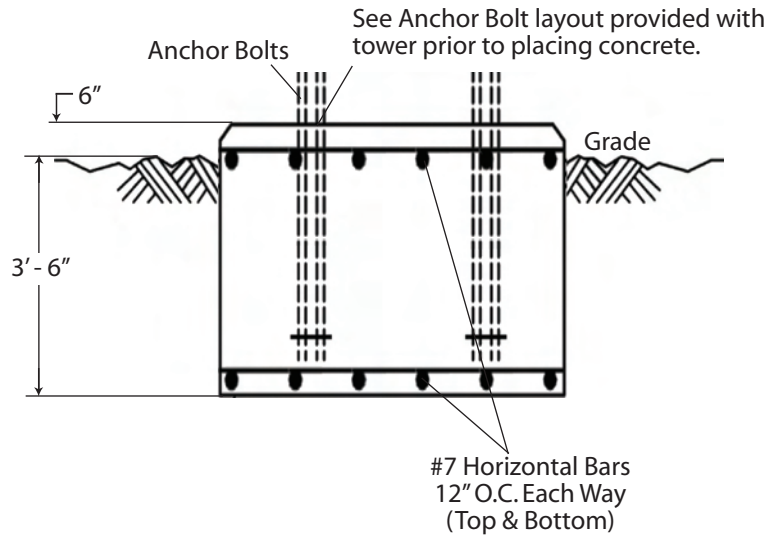
Per Rev. G requirements, any structure greater than 10' requires a climber safety device.

See page 175 for ordering information.

VG CAMERA TOWERS STANDARD FOUNDATION DETAILS



See tower elevation page for "W" dimensions.



ACCESSORIES

 <p>ANTI-CLIMB PANELS VW917A ORDERED SEPARATELY</p>	 <p>CLIMBING HARNESS TTFBH-4D JOURNEYMAN HARNESS TTFBH-C/P PROFESSIONAL HARNESS</p>	 <p>SAFETY CABLE SLIDER WITH CARABINEER TT-WG-500-W/SMC</p>	<p>SAFETY CABLE SYSTEM TT050SSL FITS ALL TOWER HEIGHTS</p>
---	---	--	---

GENERAL NOTES

1. Tower designs are in accordance with ANSI/TIA/222-G.
2. Camera and mount assumed symmetrically placed at tower top.
3. Tower design assumes one 7/8" line on each tower face.
4. Assembly drawings and standard foundation details are provided with the tower.
5. Standard foundation illustrated is for general information only and is based on Rev G presumptive clay soil parameters.

Refer to pages 147-153 for Foundation General Notes.