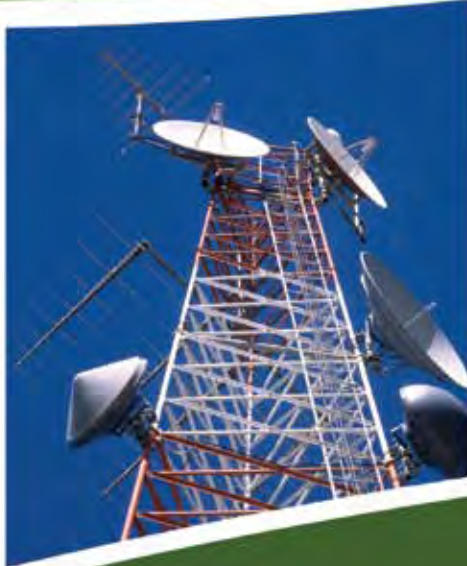
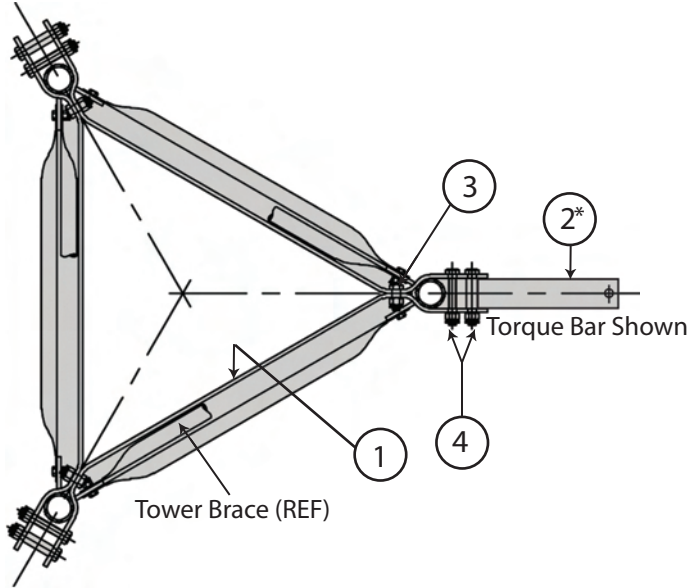


# TOWER MODIFICATION MATERIAL





ROHN MODEL 80 GUYED TOWER
STANDARD GUY BRACKETS FOR 83 & 84 SECTIONS
(2 3/8" & 2 7/8" O.D. LEGS)



GA80 Bill of Material table with columns: Item, Qty., Part No., Description. Rows include Bar Flat Bracket Guy, Bar Flat TA, Bolt Assembly 3/4 x 2 HSB A325, and Bolt Assembly 3/4 x 5 HSB A325.

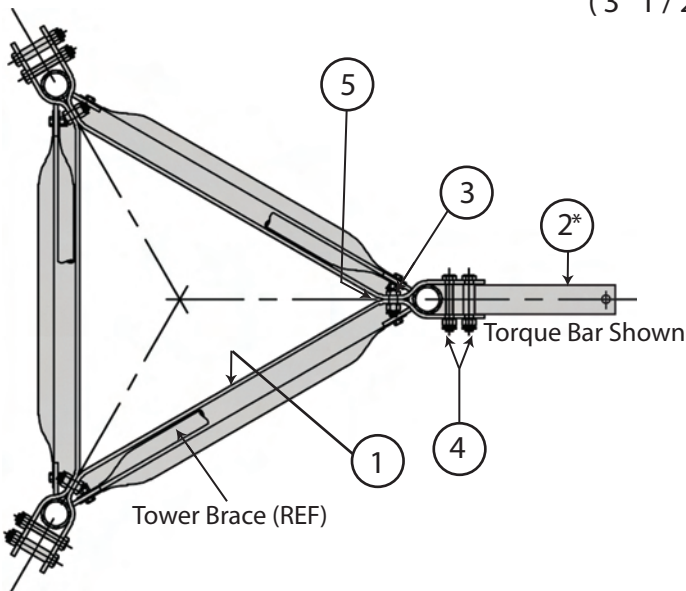
These guy brackets are designed for 5/8" EHS maximum guys at 80% guy radius. For use on ROHN Model 80 tower only, supported on brace clips.

For single braced standard sections, guy bracket must be used at the top of the section.

For double braced standard sections, guy brackets may be used at any panel point.

ROHN MODEL 80 GUYED TOWER

STANDARD GUY BRACKETS FOR 85 SECTIONS
(3 1/2" O.D. LEGS)



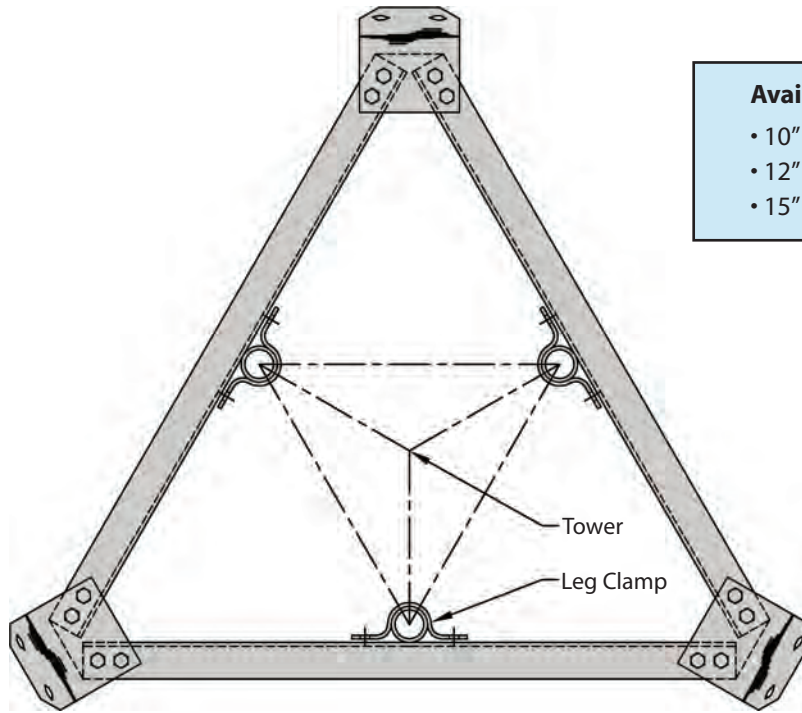
GA85 Bill of Material table with columns: Item, Qty., Part No., Description. Rows include Bar Flat Bracket Guy, Bar Flat TA, Bolt Assembly 3/4 x 2-3/4 HSB A325, Bolt Assembly 3/4 x 5-1/2 HSB A325, and Spacer Bracket Guy.

These guy brackets are designed for 5/8" EHS maximum guys at 80% guy radius. For use on ROHN Model 80 tower only.

For single braced standard sections, guy bracket must be used at the top of the section.

For double braced standard sections, guy brackets may be used at any panel point.

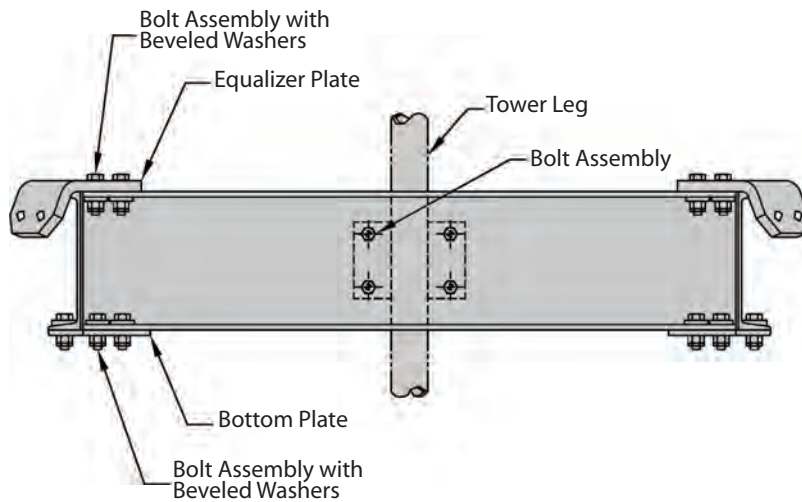
## TORQUE ARM CHANNEL ASSEMBLY FOR 80 TOWERS



**Available Sizes:**

- 10" Channel (C10x15.3)
- 12" Channel (C12x20.7)
- 15" Channel (C15x33.9)

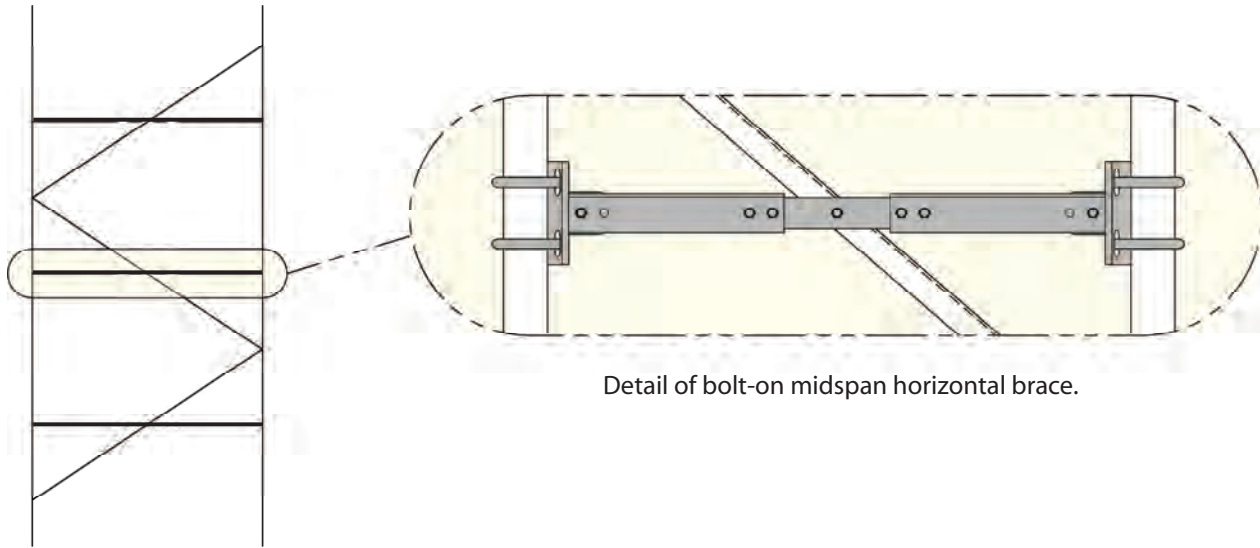
To order, provide leg size and desired channel size.



**NOTE:** For single braced sections, torque arm must bear on brace clips above flange plates. For double braced sections, torque arm must bear on brace clips at any panel point.

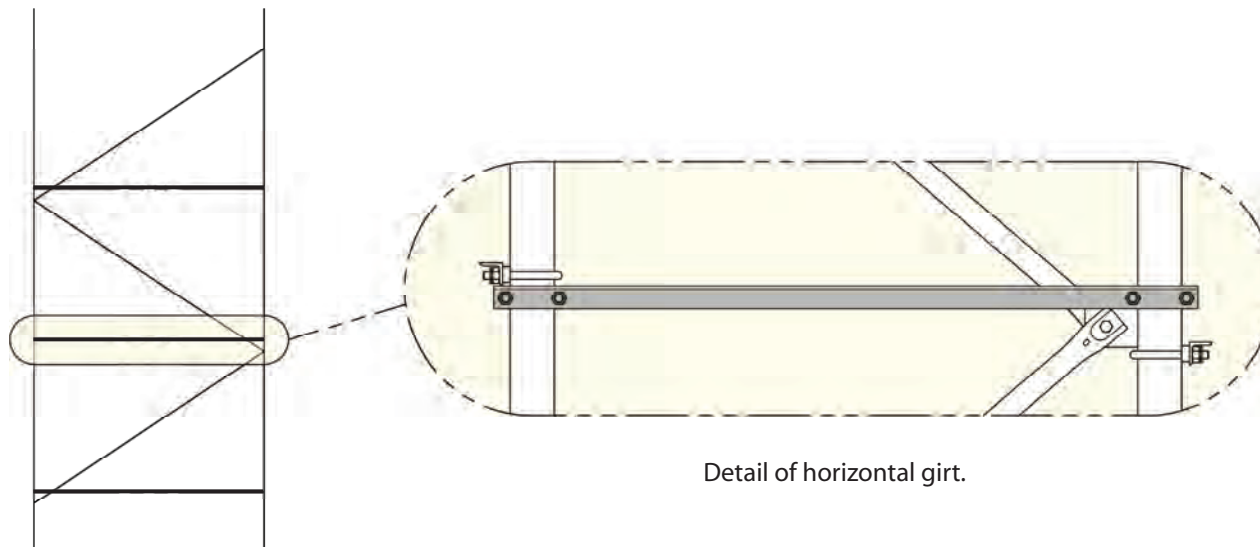
# REINFORCEMENTS FOR 80 SERIES TOWERS

STANDARD PARTS AVAILABLE FOR TOWER MODIFICATIONS  
AND FIELD REINFORCEMENT



Detail of bolt-on midspan horizontal brace.

To order, provide leg size and size of horizontal desired.



Detail of horizontal girt.

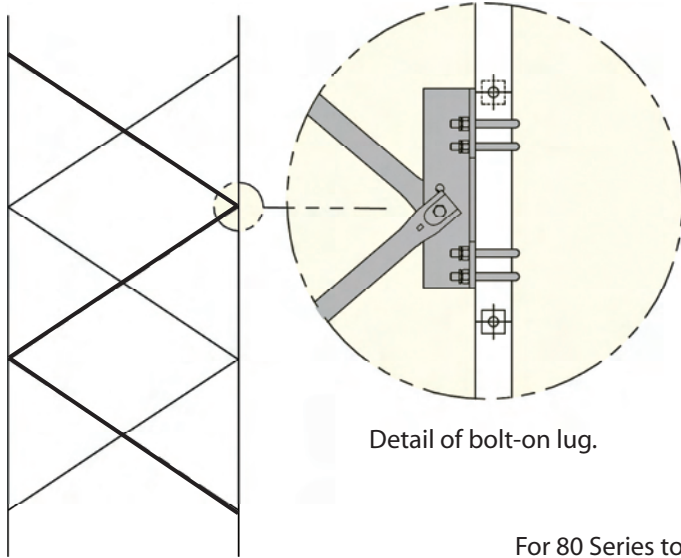
Added braces are shown as a bold line.



## REINFORCEMENTS FOR 80 SERIES TOWERS

STANDARD PARTS AVAILABLE FOR TOWER MODIFICATIONS  
AND FIELD REINFORCEMENT

Similar reinforcements available for 90 series towers.



Detail of bolt-on lug.

For 80 Series towers

X-Brace Lug Requirements (Pipe)			
Leg O.D.	Assy.P/N	Lug P/N (1)	U-Bolt Assy.(4)
2.38	KB497A	KB299	JR83A
2.38	KB497ASP	KB299SP	JR84A
2.88	KB498A	KB489	JR84A
2.88	KB498ASP	KB489SP	JR88A
2.88	KB498ASP1	KB489SP1	JR89A
3.50	KB499A	KB492	JR88A

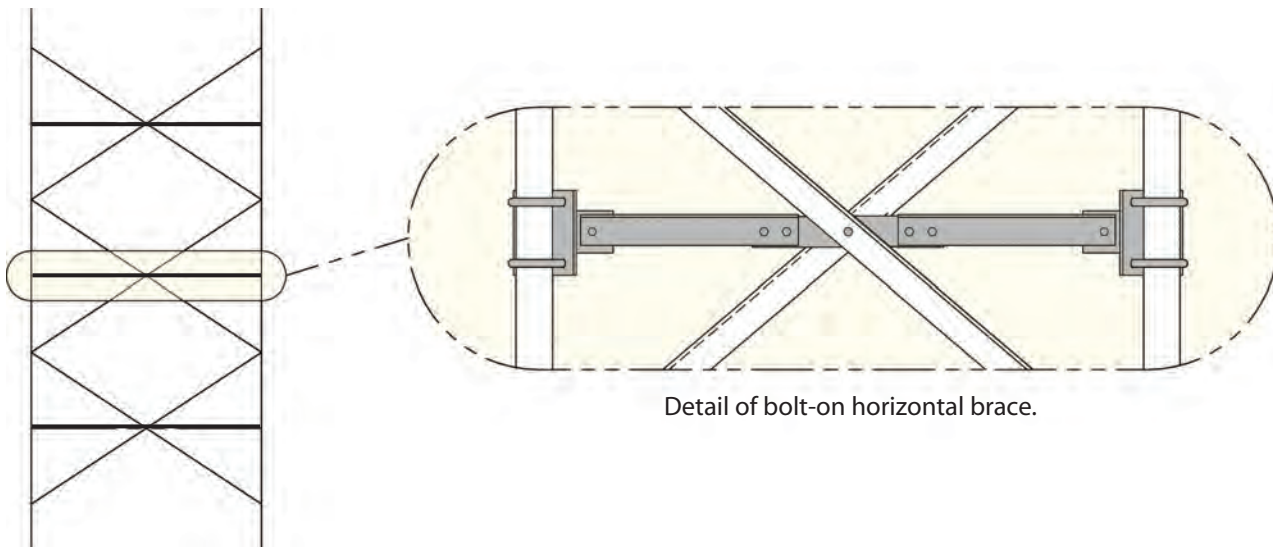
X-Brace Lug Requirements (Solid Rod)			
Leg O.D.	Assy.P/N	Lug P/N (1)	U-Bolt Assy.(4)
2.25	KB565A	KB555	JR83A
2.50	KB566A	KB556	JR83A
2.75	KB567A	KB557	JR84A
3.00	KB568A	KB558	JR84A
3.25	KB569A	KB559	JR88A

### Standard Bracing Available

Bracing (16 GA)	
Part No.	Description
KB35R	1.50" Tube, 16GA Diagonal
KB36R	1.50" Tube, 16GA Horizontal
210018GA	1/2 x 1-1/2 A325 Bolt Assy.

Bracing (11 GA)	
Part No.	Description
KB37R	1.50" Tube, 11GA Diagonal
KB38R	1.50" Tube, 11GA Horizontal
210019GA	1/2 x 1-3/4 A325 Bolt Assy.

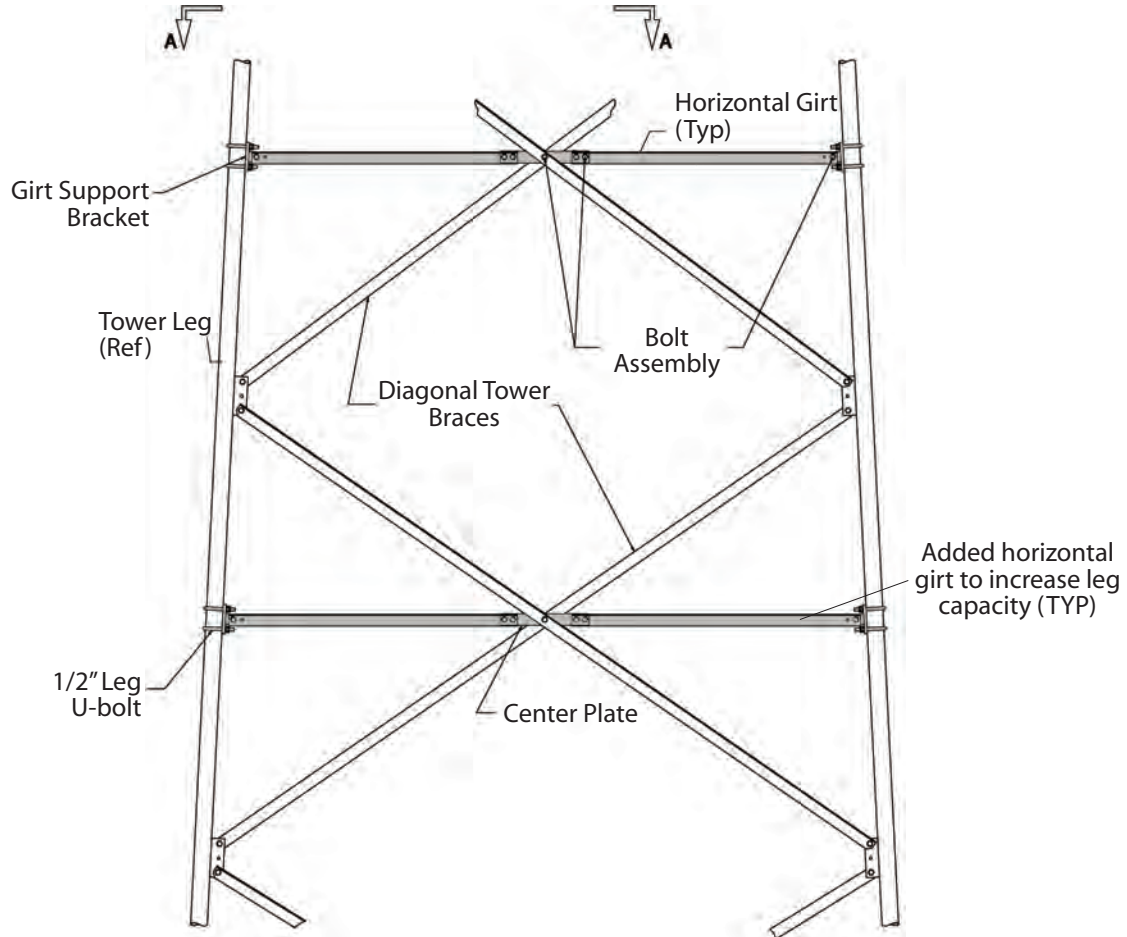
Standard and Heavy Duty replacement braces are available. To order heavy duty braces, specify leg size and desired brace size.



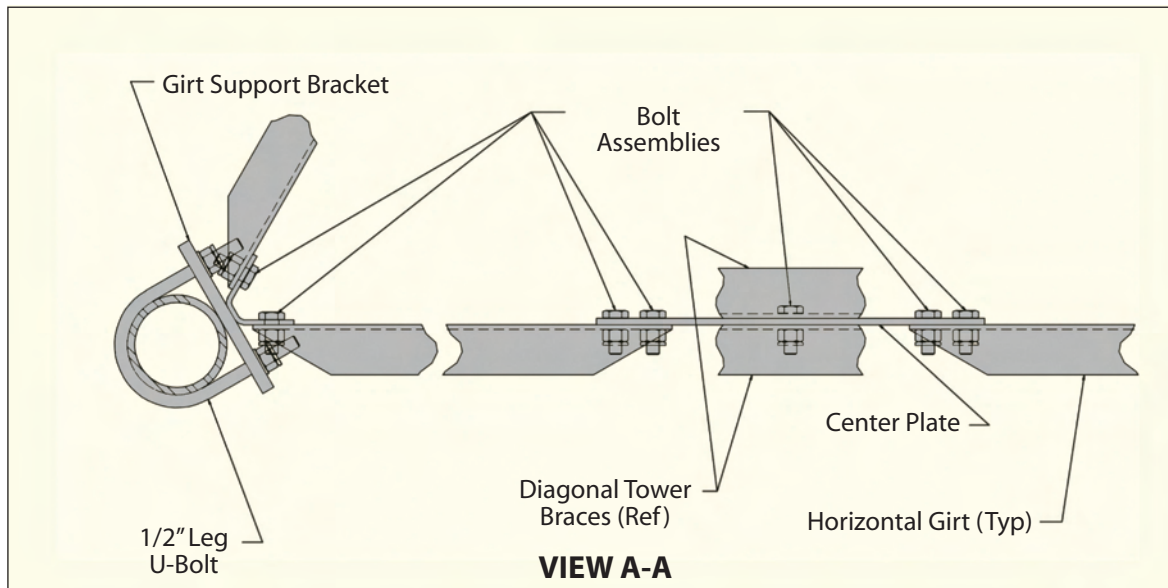
Detail of bolt-on horizontal brace.

Added braces are shown as a bold line.

**SELF-SUPPORTING REINFORCEMENTS**  
STANDARD PARTS AVAILABLE FOR TOWER MODIFICATIONS  
AND FIELD REINFORCEMENT



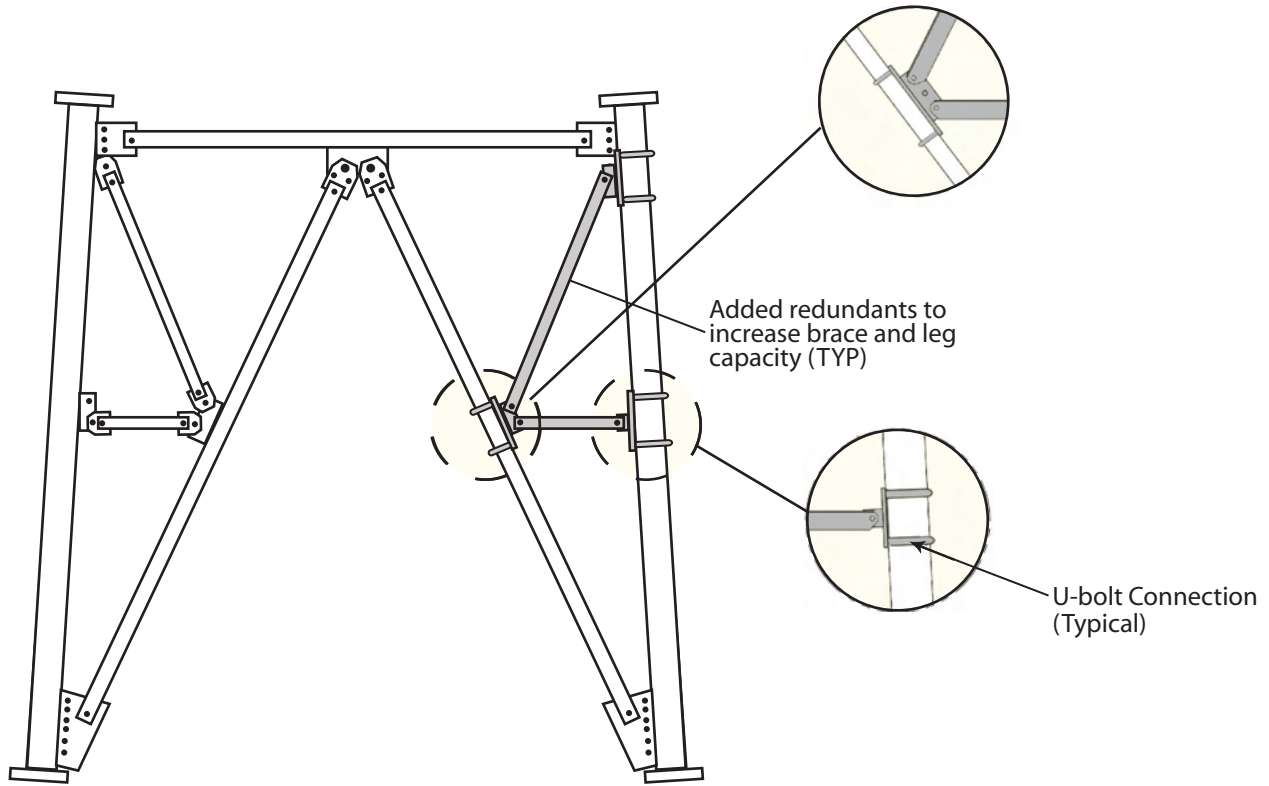
*Bolt on brackets are available for all SSV towers.*



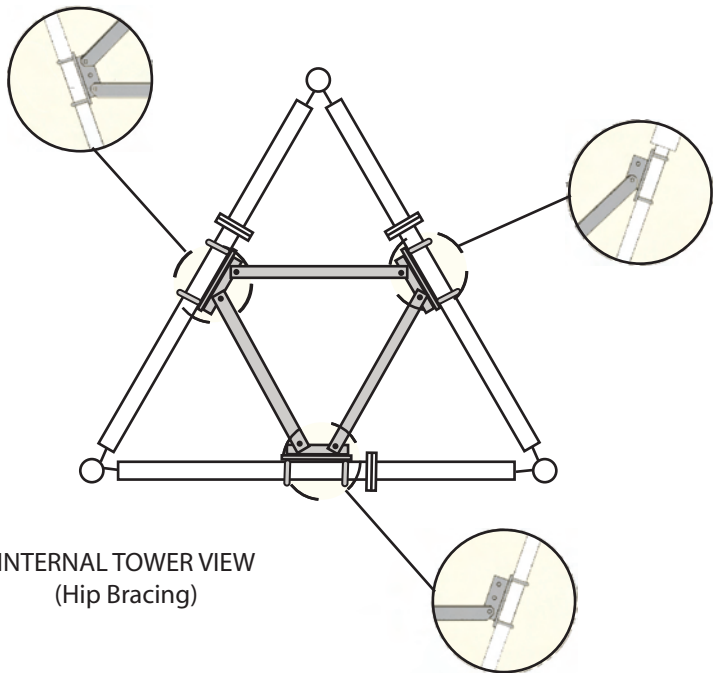


# SSMW SELF-SUPPORTING REINFORCEMENTS

STANDARD PARTS AVAILABLE FOR TOWER MODIFICATIONS  
AND FIELD REINFORCEMENT



Bolt-on brackets are available for all SSMW legs and internal braces.



INTERNAL TOWER VIEW  
(Hip Bracing)

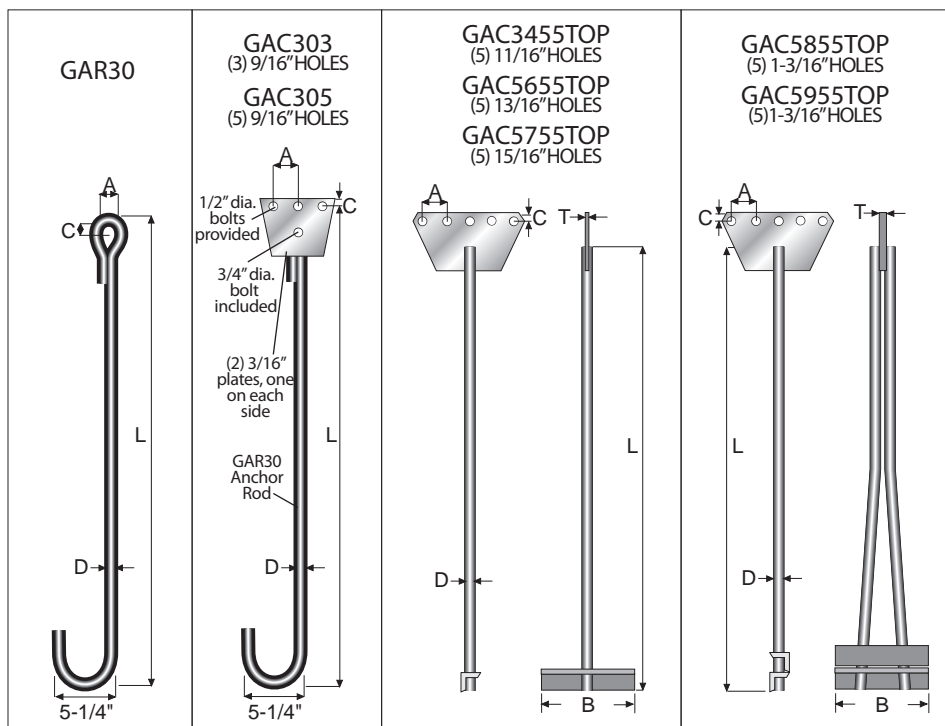


### GUY ANCHOR SELECTION CHART

GUYS		TURNBUCKLES		ANCHOR RODS COMPATIBLE WITH TURNBUCKLE SIZE						
SIZE & TYPE	ULTIMATE STRENGTH (LBS)	SIZE	ULTIMATE STRENGTH (LBS)							
3/16EHS	3990	3/8	6000		GAC					
1/4EHS	6650	1/2	11000	GAR	GAC	GAC34				
5/16EHS	11200	5/8	17500	GAR	GAC	GAC34	GAC56			
3/8EHS	15400	5/8	17500	GAR		GAC34	GAC56			
7/16EHS	20800	3/4	26000	GAR		GAC34	GAC56	GAC57		
1/2EHS	26900	7/8	36000				GAC56	GAC57		
9/16EHS	35000	7/8	36000				GAC56	GAC57		
5/8EHS	42400	1	50000					GAC57	GAC58	GAC59
3/4EHS	58300	1-1/4	76000						GAC58	GAC59

### ANCHOR RODS

Type	L	A	B	C	D	T	Part No.	Weight (lbs.)
GAR	84"	1"	-	2"	5/8"	-	GAR30	9
GAC	84"	2"	-	1"	5/8"	3/16"	GAC303	13
GAC	84"	2"	-	1"	5/8"	3/16"	GAC305	14
GAC34	84"	2"	12"	1"	3/4"	3/8"	GAC3455TOP	25
GAC56	120"	2-1/2"	12"	1-1/4"	1-1/4"	1/2"	GAC5655TOP	65
GAC57	168"	3"	12"	1-3/8"	1-7/16"	3/4"	GAC5755TOP	125
GAC58	192"	4"	12"	1-3/4"	1-1/4"	1"	GAC5855TOP	220
GAC59	240"	4"	18"	1-3/4"	1-7/16"	1"	GAC5955TOP	310



**NOTE:** GAC Anchors require use of eye and eye turnbuckles. All other anchors are for use with eye and jaw turnbuckles. Refer to page 297.